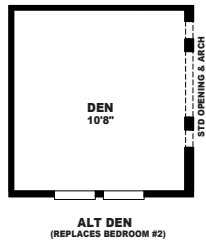
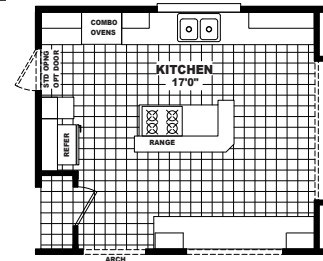


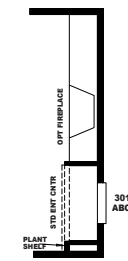
**MODEL: GV32764F**  
APPROXIMATELY 2332 SQ. FT.  
4 BEDROOM, 3 BATH



(3) 3012 WINDOWS ABOVE  
W/OPT TOWER DORMER  
OPT TOWER DORMER  
AVAILABLE W/4-12 ROOF ONLY



ALT KITCHEN W/COOKTOP



OPT FIREPLACE

REVISED 8/22/07

REVISED 08/06/08

IMPORTANT: Because we continuously update and modify Cavco products it is important for you to know that our brochures and literature are for illustrative purposes only. All information contained herein may vary from the actual home we build. Dimensions are nominal and length and width measurements are from exterior wall to exterior wall. The right is reserved to make changes at any time, without notice or obligation, in prices, colors, materials, specifications, features and models. Please check with your retailer for specific information about the home you select. (Add approximately four feet to determine transportable length.)  
©2008 Cavco Industries, Inc. | All Rights Reserved | cavco.com

This home uses the LS Standard Features.

**Construction Features**

- Solid I-Beam Frame Construction With Corrosion Resistant Undercoating
- Drain System Below Steel Frame For Easy Access
- Vapor Barrier Between Frame System and Subfloor
- Sealed Floor Duct System and Water Lines, Installed Inside R-22 Rated Fiberglass Blanket Insulation Under Subfloor
- 5/8 Inch OSB Floor Decking
- 2" x 6" Subfloor Construction (2x8 on 32 Wides) With Joists Spaced 16" On Center
- Shut-Off Valves On All Water Fixtures
- 2" x 4" Exterior Wall Construction With Studs Spaced 16" On Center and R-11 Rated Fiberglass Insulation
- 96" Exterior Sidewall Height
- 100 Amp Electric Service With Copper Wiring and Interior Panel Box
- Forced Air Gas Furnace and Air Exchange System With Toe Kick Air Registers in Kitchen and Baths
- 40 Gallon Electric Water Heater
- Engineered Roof Trusses and Laminated Plywood Centerline Beam
- OSB or Plywood Roof Decking With Class A Rated Shingles and Underlayment
- R-30 (Or Higher) Rated Blown Roof Insulation

**Exterior Features**

- Vertical Cement Siding With Hand-Painted Finish
- Attractive Shutter Treatments on Hitch End and Front Door Side
- Accent Columns On Front Door Side
- Two-Color Exterior Design Available In Several Color Combinations
- Large White Vinyl Dual-Paneled Windows With Locks
- Angled Recessed Entry w/Side Window (Most Homes – See Brochure)
- Residential Insulated Front Door With Deadbolt
- Residential 9-Lite Rear Door With Deadbolt
- Exterior Lights At Front and Rear Doors
- Roof Eaves On All Sides (28 & 32 Wides)
- Exterior GFCI Electric Outlet

**Interior Features**

- Congoleum "Legacy" Linoleum Hard-Surface Floor Covering, Including Entryway
- FHA Approved Carpet and Pad Available In Many Colors
- Dining Room Chandelier, Bedroom Ceiling Lights and Bath Vanity Lights

- Vaulted Ceilings Throughout Entire Home With Knockdown Textured Finish
- Taped and Textured Interior Walls Throughout Home
- 2 Panel "Camden" Interior Passage Doors, Mortised With 150lb Hinges & Lever Handles
- 5/8" Thick Interior Door Jambs With Profiled Door Casing
- Upgrade Drapery Valances With Aluminum Mini Blinds
- Wood Closet Shelving And Poles Wardrobes and Closets
- Decorator Style Electrical Receptacles and Silent Switches
- 5 Can Lights In Kitchen
- Rounded T&T Window Corners Throughout
- Semi-Gloss White Interior Paint
- Ceiling Fan Ready In Living Room, Master Bedroom, and Family Room (if applicable)

**Kitchen, Bath & Bonus Room Features**

- Modular Cabinet Construction With 3/4" Thick, Bored and Screwed Face Frames
- 39" Tall Kitchen Overhead Cabinets With Finished Interiors, Adjustable Shelves and Crown Cabinet Moulding
- Hardwood Cabinet Doors With Concealed, Adjustable Hinges
- Drawer over Door Cabinet Construction in Kitchen with Steel Drawer Guides
- High-Pressure Laminate Countertops, Available In Several Colors
- 6" Ceramic Tile Backsplashes On Kitchen Countertops and Bath Vanities
- 2" Tile or Crescent Countertop Edging Throughout
- 6" Marble Window Sill in Kitchen
- Elegant Deep White Composite Kitchen Sink
- 16 Cubic Foot Double-Door, Frost-Free Refrigerator
- 30" Free-Standing Gas Range
- Utility Overhead Shelf Over Washer and Dryer Area In Bonus Room
- 36" High Master Bath Lavy
- Huntington Brass Single Lever Faucets on Bath Lavies, Tubs and Showers (N/A on Corner Tub)
- Exhaust Fans In Baths
- Tape & Texture Platform Corner Tub and Separate Fiberglass Shower w/Glass Door In Master Bath (As Shown On Brochure)
- One-Piece Fiberglass Tub/Shower In Main Bath(s)
- Elongated Water Saver Commodes
- Medicine Cabinets, Towel Bars and Tissue Holders In Baths

**Popular Options**

- 2 x 6 Exterior Walls With R-19 Insulation
- Roof Insulation Upgraded to R-35 or R-40 (N/A On Singlewides)
- Roof Dormer and Upgraded Siding
- Oil Rubbed Bronze Package Décor Package
- Upgrade Ceiling Cove, Baseboard and Door Molding Package
- Gas or Wood Burning Fireplaces
- Premium Carpet In Several Styles and Colors
- Upgraded Hardwood Face Frames
- Upgrade Solid Surface Counter Tops & Splashes
- Premium Refrigerators and Ranges
- Dishwasher and "Space-Saver" Microwave
- Ceiling Fans and Upgrade Lighting
- Skylights In Kitchen and Baths

**Your Cavco West Retailer:**